

Government grant

The government grant for expanding to Oita Prefecture

Investment amount × up to **5%**

※ There are individual requirements for the investment amount and employees eligible for calculation.

Maximum

3 Billion yen

Industrial agglomeration

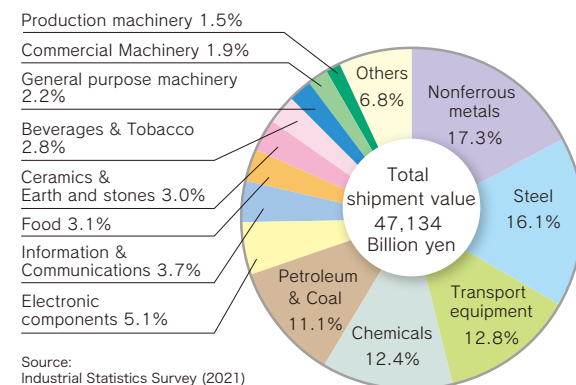
A well-balanced industrial agglomeration

Expanding business opportunities with networks

Oita Prefecture is home to a balanced collection of companies from various fields, including metals, petroleum, chemicals, semiconductors, precision machinery, automobiles, and IT. Manufacture shipment value ranks second in the Kyushu region, following Fukuoka Prefecture.

The proportion of manufacture shipment value, etc. in Oita Prefecture

※By mid-industry classification, with four or more employees



Oita prefecture information

Hot Spring



Recognized as "The Onsen Prefecture," boasts the most hot spring sources and the highest volume of spring water in Japan.

Food



Proud of delicious and fresh agricultural and marine products.

History



Home to numerous valuable historical and cultural heritages, including the national treasure Usa Shrine and the Usuki Stone Buddhas.

Nature



Blessed with rich natural scenery and a mild climate.



For tourism information



For YouTube content

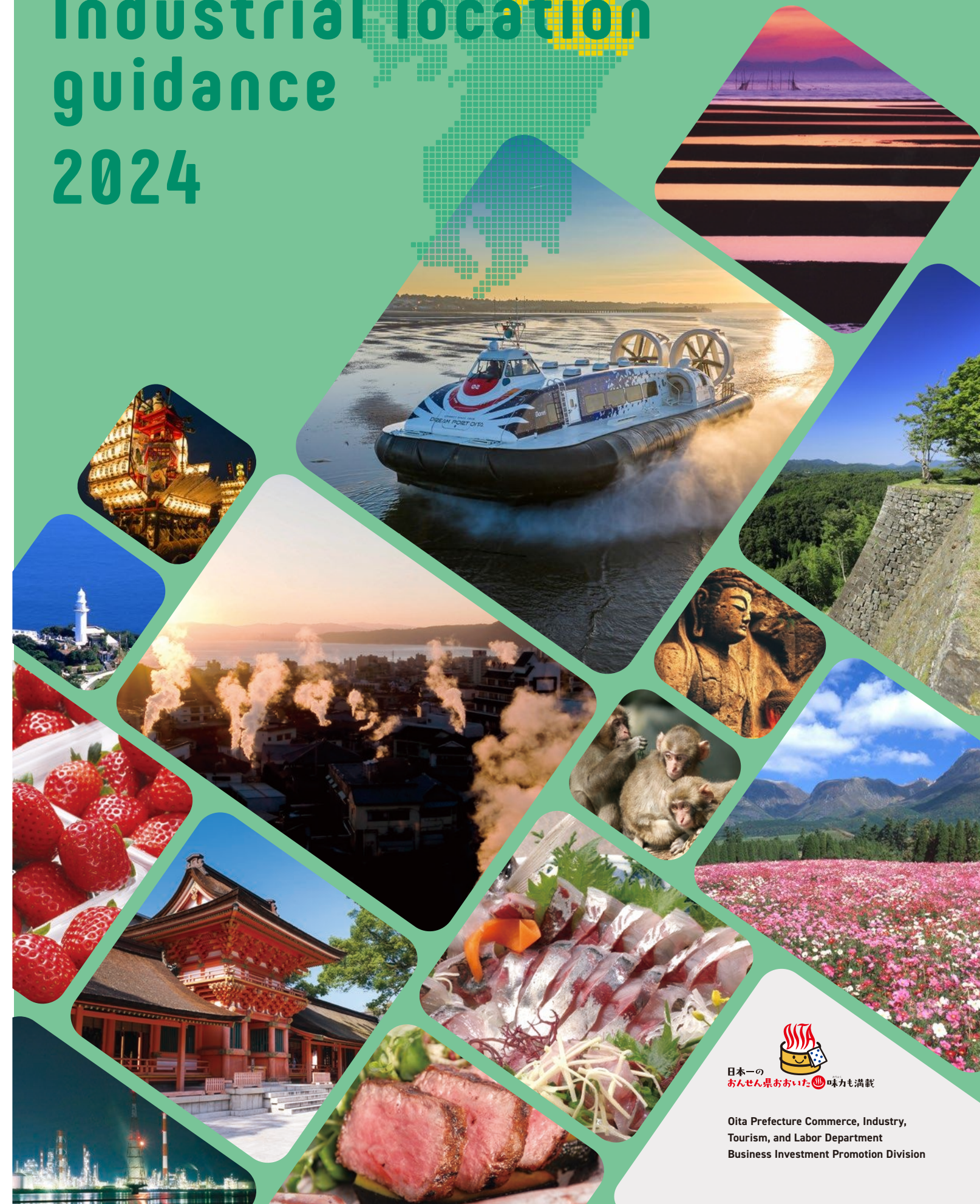


Oita Prefecture Commerce, Industry, Tourism, and Labor Department
Business Investment Promotion Division

〒870-8501 3-1-1 Otemachi, Oita City, (Prefectural Government Main Building 7th Floor)

TEL.097-506-3246
mail : a14260@pref.oita.lg.jp
http://www.ritti-oita.jp/

OITA Industrial location guidance 2024

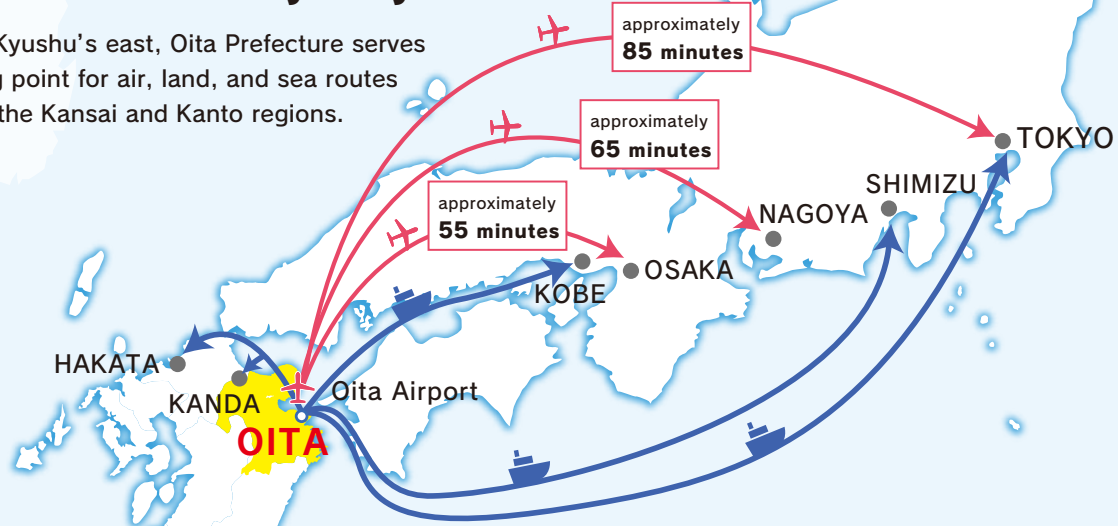


Oita Prefecture Commerce, Industry, Tourism, and Labor Department
Business Investment Promotion Division

Comprehensive Transportation Access

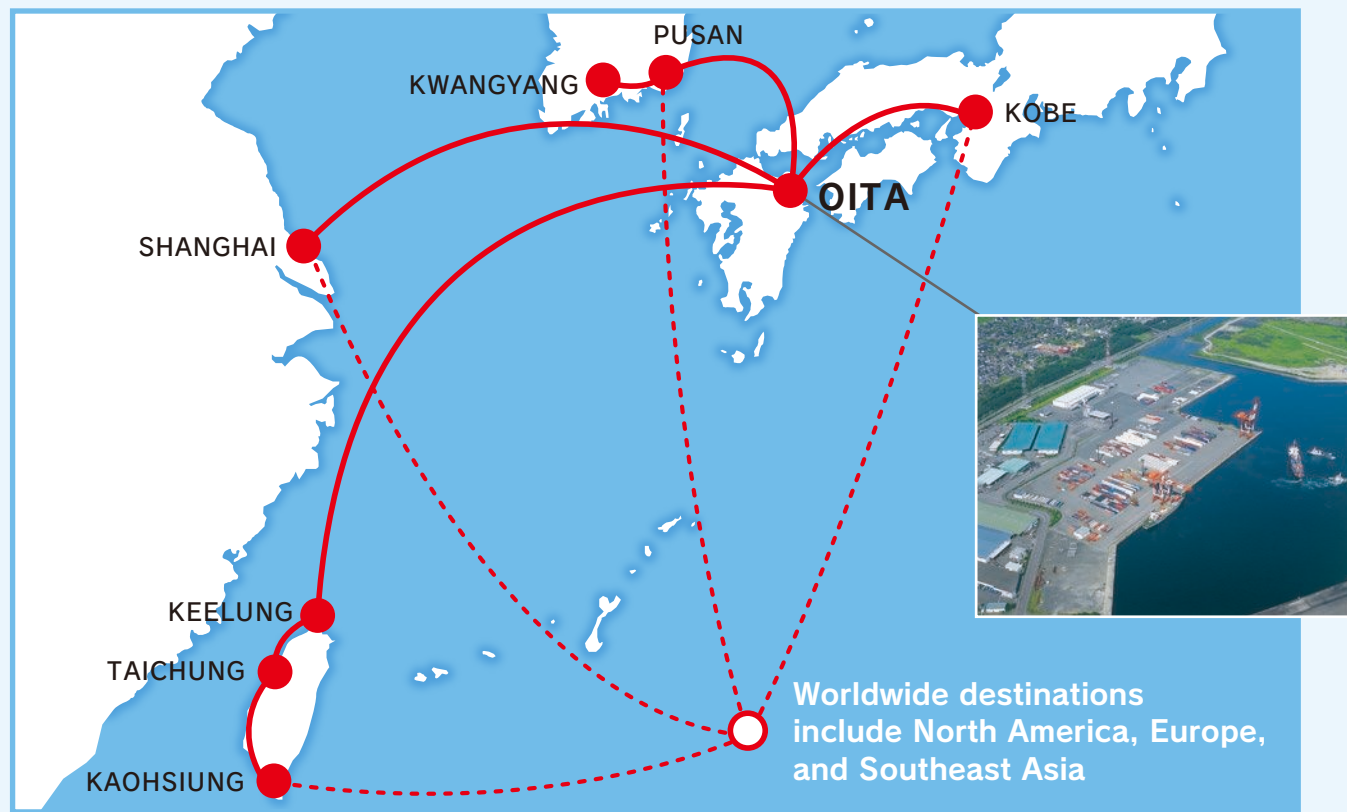
Leveraging well-developed logistics routes as the "Eastern Gateway of Kyushu"

Situated in Kyushu's east, Oita Prefecture serves as a starting point for air, land, and sea routes connecting the Kansai and Kanto regions.



Oita Port Ozai Container Terminal

As Kyushu's largest prominent hub port, it boasts connections through major transshipment points worldwide, such as Busan, Shanghai, Keelung, and Kobe.



Worldwide destinations include North America, Europe, and Southeast Asia

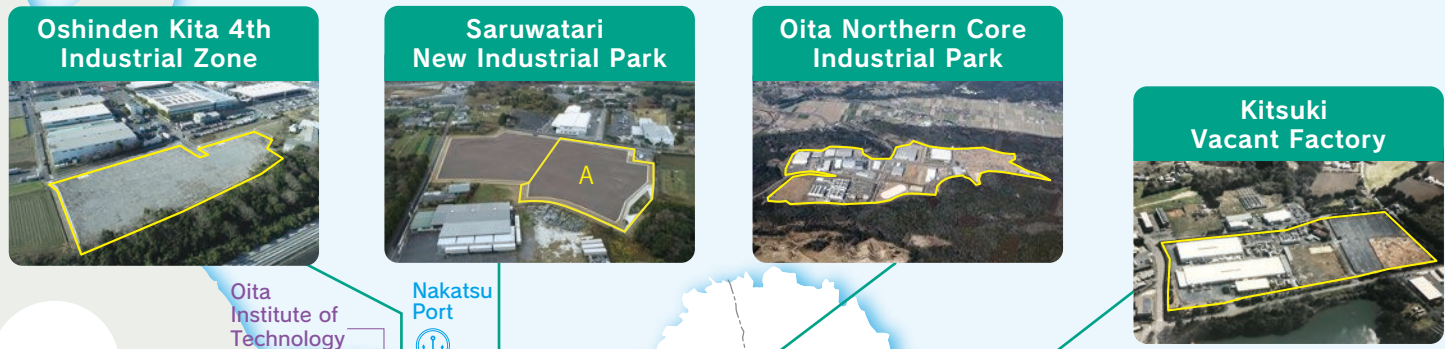
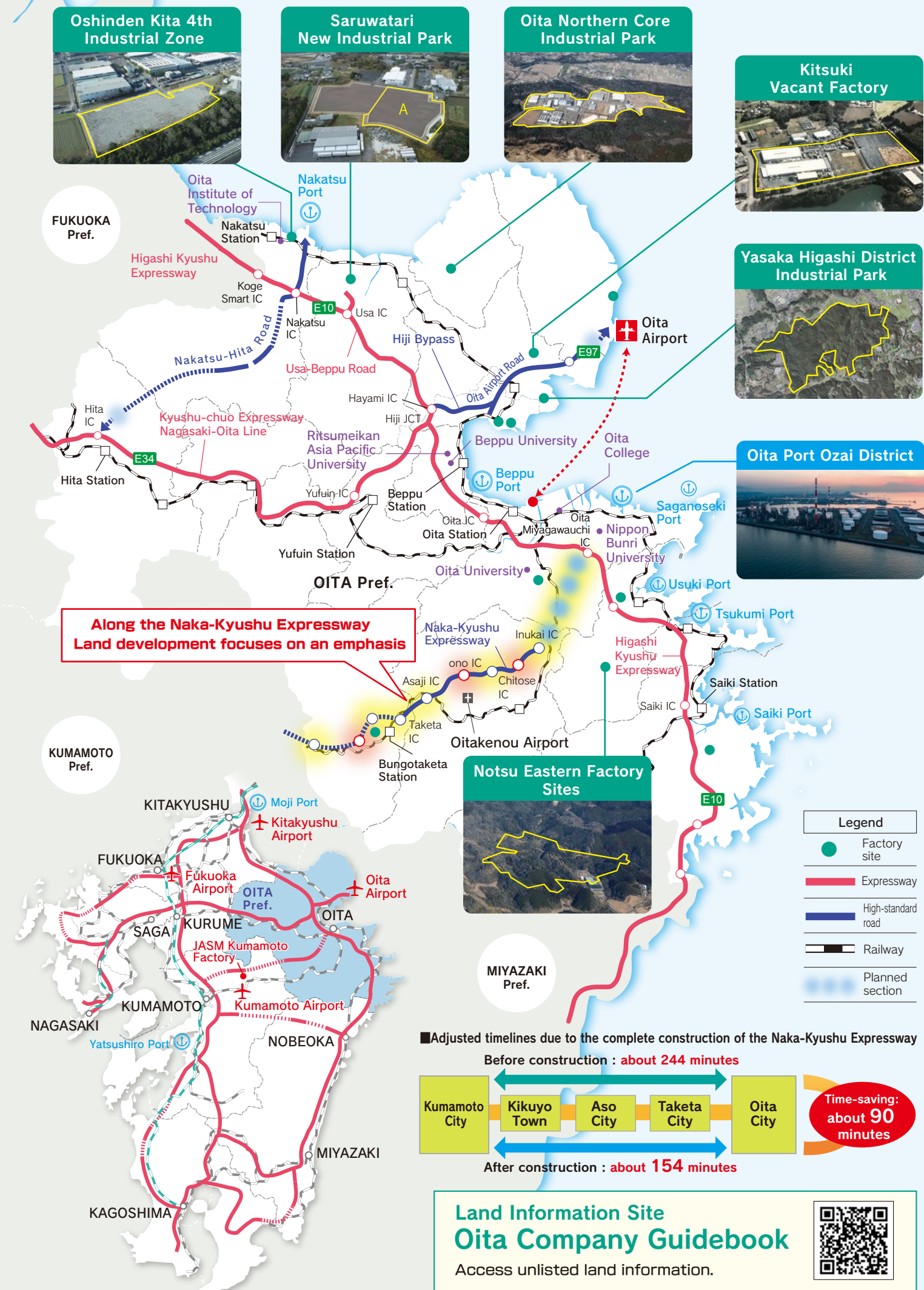
TOPICS Hovercraft

The amphibious hovercraft, set to launch in fall 2024, will offer an approximately 30-minute connection between Oita Airport and Oita City.



Upcoming Hovercraft

Land route (Expressway): approximately 60 minutes



Along the Naka-Kyushu Expressway Land development focuses on an emphasis



Land Information Site Oita Company Guidebook
Access unlisted land information.